



# ZEB BAT004 ZEB BAT006 ZEB BAT007 ZEB BAT009

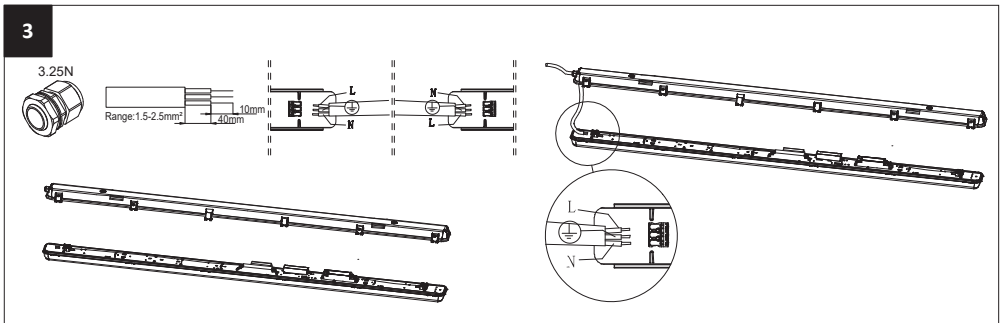
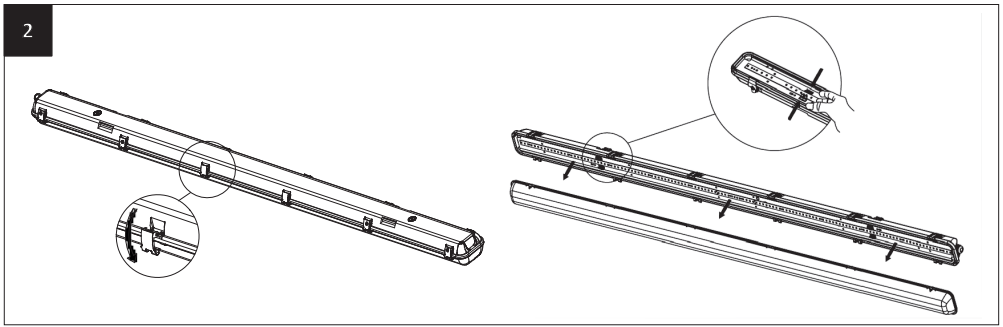
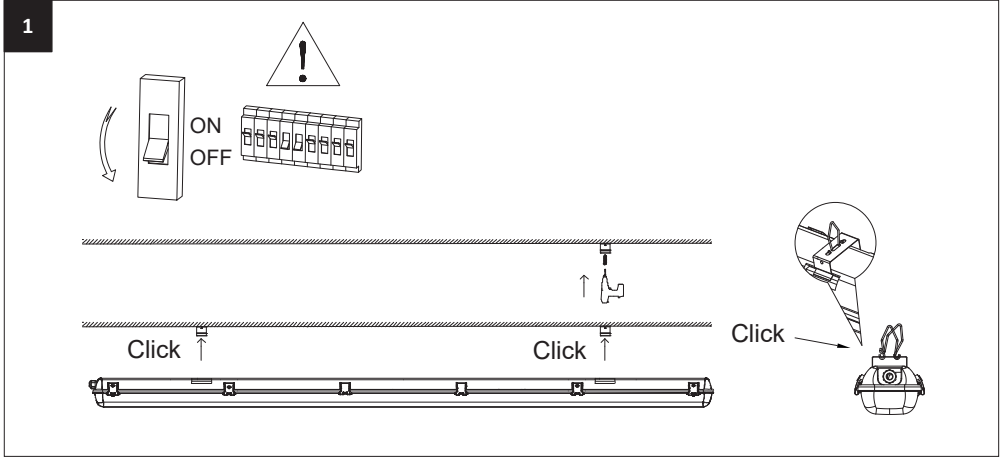
EN Instruction Manual  
FR Mode d'emploi  
DE Anwendung  
IT Manuale d'uso  
NL Gebruiksaanwijzing  
SE Bruksanvisning  
SI Navodila za uporabo  
FI Käyttöopas  
HR Korisnički priručnik  
ES Manual de instrucciones



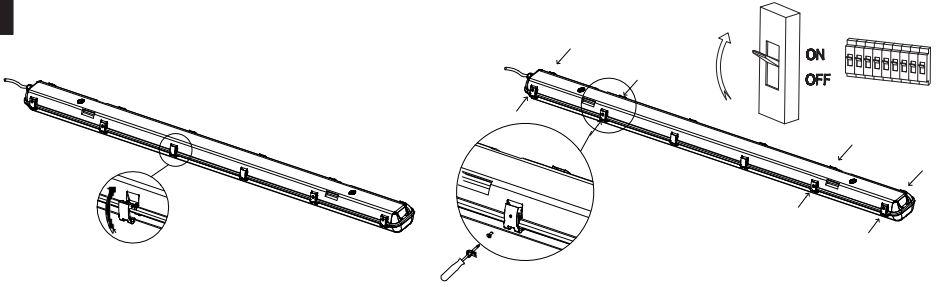
# zebra®

13 boulevard du  
fort de Vaux  
75017 Paris FRANCE

## 1. Installation:



4



**220-240V~ 50/60Hz IP65 IK08 UK CA C E**     **ta** 40°C


**WARNING:**

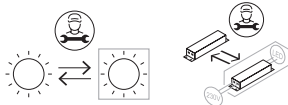
1. Ensure that the main electrical supply is switched off before installing the luminaire.
2. The light source contained in this luminaire shall only be replaced by the manufacturer or his service agent or a similar qualified person.
3. Luminaire should be installed by authorized electrician only according to national wiring rules. PVC wire is forbidden, suggest using H05RN-F wire or more resistant
4. For ZEB BAT006, ZEB BAT007 and ZEB BAT009, light source of energy efficiency class <C>;  
For ZEB BAT004, light source of energy efficiency class <D>.
5. This marking indicates that this product should not be disposed with other household wastes. To prevent possible harm to the environment or human health from uncontrolled waste disposal, recycle it responsibly to promote the sustainable reuse of material resources. To return your used device, please use the return and collection systems or contact the retailer where the product was purchased. They can take this product for environmental safe recycling.
6. This luminaire is linkable, the maximum link number must be less than as below:



ITEM	Circuit breaker type	B16	B10	C16	C10
ZEB BAT006		17	17	17	17
ZEB BAT004		9	9	9	9
ZEB BAT007 ZEB BAT009		7	7	7	7

**2. Sensor:**

ON ↑ 	Daylight Sensor			Hold Time			Detection Area			
	1	2	3	4	5	6	7	8		
ON	ON	ON	2 Lux	ON	ON	ON	5S	ON	ON	100%
-	ON	ON	10 Lux	ON	ON	-	30S	ON	-	75%
-	ON	-	30 Lux	ON	-	ON	90S	-	ON	50%
-	-	ON	50 Lux	-	ON	ON	5min	-	ON	25%
-	-	-	Disable	-	-	-	20min	-	-	
-	-	-		-	-	-	30min	-	-	



**3. Specification:**

Item Code	Dimension	Power	Lumen	CCT	Input current	PF	Life time@25°C
ZEB BAT006	1560*70*78mm	26W	3600lm @4000K	4000K	115mA	0.9	50000H
ZEB BAT004	1560*100*78mm	47W	6600lm @4000K	4000K	205mA	0.9	50000H
ZEB BAT007	1560*100*78mm	33W-41W-56W	5300lm-6500lm-9000lm @4000K	4000-5000-6500K	155-190-260mA	0.9	50000H
ZEB BAT009	1560*100*78mm	33W-41W-56W	5300lm-6500lm-9000lm @4000K	4000-5000-6500K	165-200-265mA	0.9	50000H