



# ZEB BAT005 ZEB BAT008 ZEB BAT010

EN Instruction Manual  
FR Mode d'emploi  
DE Anwendung  
IT Manuale d'uso  
NL Gebruiksaanwijzing  
SE Bruksanvisning  
SI Navodila za uporabo  
FI Käyttöopas  
HR Korisnički priručnik  
ES Manual de instrucciones

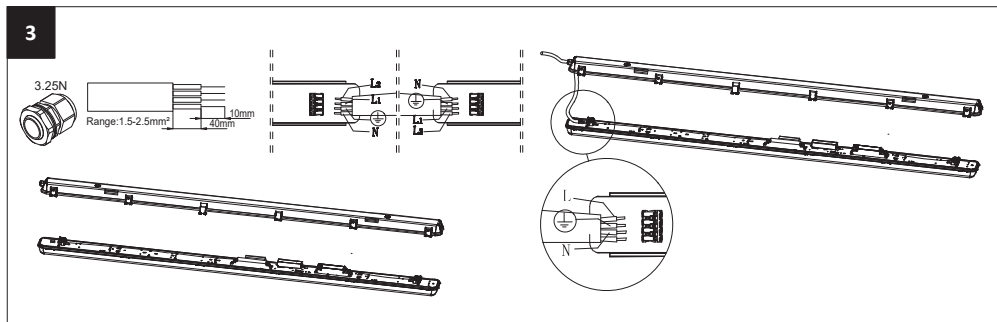
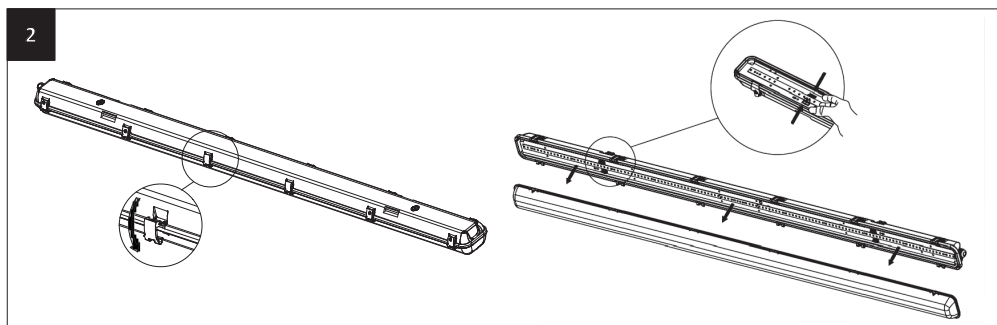
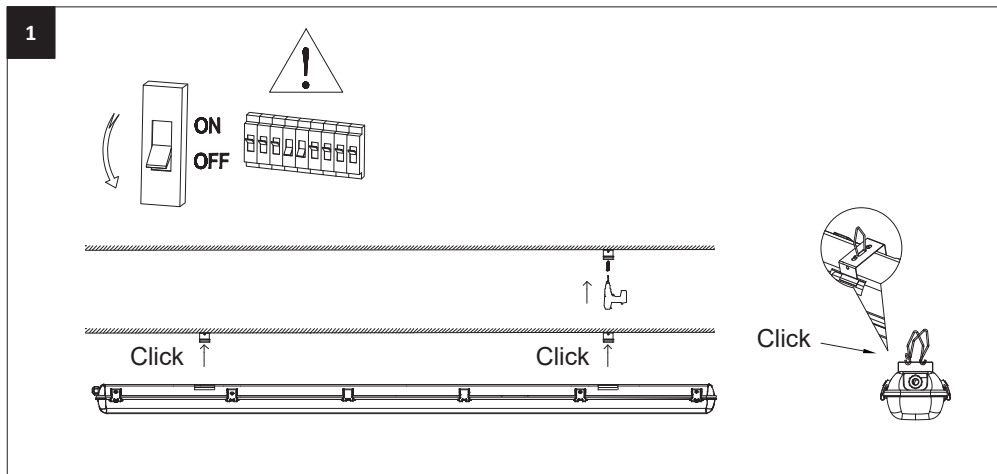


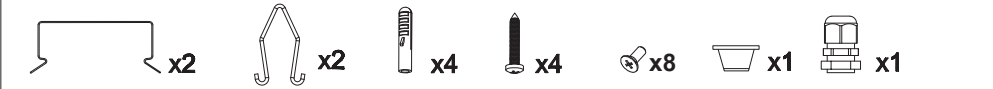
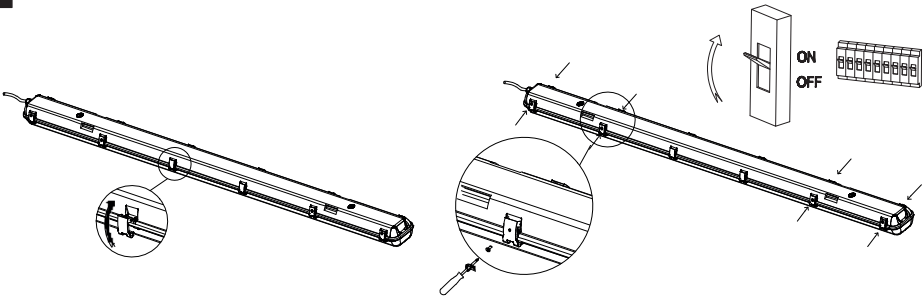
Points de collecte sur [www.quefairedemesdechets.fr](http://www.quefairedemesdechets.fr)  
Privilégiez la réparation ou le don de votre appareil !

# zebra®

13 boulevard du  
fort de Vaux  
75017 Paris FRANCE

## 1. Installation:





### 3. Emergency Self-test

#### Self-test

The emergency kits carry out self-tests automatically to ensure its functionality.

The self-test includes 3 types of tests:

#### Initial test

- As soon as mains supply is connected, the emergency kit will carry out a 3-seconds functional test automatically
- In case of a failure, the LED will turn permanent red. Otherwise, the charge mode will start.

#### Functional test

- Refers to charging, discharging and the functioning of load.
- Carry out for 10 seconds automatically every 30 calendar days.

#### Duration test

- Refers to the test of batteries capacity.
- Carry out every 180 calendar days.



#### Rest mode

Rest mode can be initiated during emergency mode by pressing test switch longer than 3 seconds. The rest mode will be exited automatically after reconnect AC mains.

#### Please note

If mains supply is off during self-test period, emergency conversion module would terminate self-test immediately and go into emergency mode.

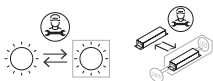
After troubleshooting, under the emergency mode, press the test button for more than 3 seconds and connect the mains power, then enter the normal working mode.

Step of changing battery: 1. Turn off the main power; 2. Switch to emergency mode; 3. Press and hold the test switch for at least 3 seconds; 4. Replace the battery; 5. Turn on the main power.

#### Explanation of LED indicator

	Color	LED indication	Status	Comment
	Green	Slow flashing green (3 sec on, 1 sec off)	Charging Mode	AC mode
	Green	Permanent green	Fully Charged	AC mode
	Green	Fast flashing green (0.1 sec on, 0.1 sec off)	Function test underway	
	Green	Slow flashing green (1 sec on, 1 sec off)	Duration test underway	
	Red	Permanent red	Load failure	Open circuit/ Short circuit Led failure (emergency mode)
	Red	Slow flashing red (1 sec on, 1 sec off)	Battery failure	Battery failed the duration test or function test / No battery
		Green and red off	DC mode	Battery operation (emergency mode)

### 4. Specification:



Item Code	Dimension	Power	Lumen	CCT	Input current	PF	Life time@25°C
ZEB BAT005	1560*100*78mm	47W	6600lm @4000K	4000K	210mA	0.9	50000H
ZEB BAT008	1560*100*78mm	33W-41W-56W	5300lm-6500lm-9000lm @4000K	4000-5000-6500K	170-205-275mA	0.9	50000H
ZEB BAT010	1560*100*78mm	33W-41W-56W	5300lm-6500lm-9000lm @4000K	4000-5000-6500K	165-200-265mA	0.9	50000H

The lumen data of the Emergency version is 2700lm.


**WARNING:**

1. Ensure that the main electrical supply is switched off before installing the luminaire.
2. The light source contained in this luminaire shall only be replaced by the manufacturer or his service agent or a similar qualified person.
3. The electric source for safety service is not a user serviceable item and shall only be replaced by the manufacturer service agent or a similar qualified person.
4. The recharge time of the battery is 24 hours.
5. The battery provide the rated duration for 5 years of normal operation. The replacement of the battery is needed when they no longer meet their rated duration of operation after the corresponding recharge period.
6. Luminaire should be installed by authorized electrician only according to national wiring rules.PVC wire is forbidden, suggest using H05RN-F wire or more resistant.
7. For ZEB BAT005, light source of energy efficiency class<D>; For ZEB BAT008 and ZEB BAT010, light source of energy efficiency class<C>.
8. This marking indicates that this product should not be disposed with other household wastes To prevent possible harm to the environment or human health from uncontrolled waste disposal, recycle it responsibly to promote the sustainable reuse of material resources. To return your used device, please use the return and collection systems or contact the retailer where the product was purchased. They can take this product for environmental safe recycling.
- 9.This luminaire is linkable, the maximum link number must be less than as below:



ITEM	Circuit breaker type			
	B16	B10	C16	C10
ZEB BAT005	9	9	9	9
ZEB BAT008 ZEB BAT010	7	7	7	7

**2. Sensor:**

Daylight Sensor				Hold Time				Detection Area							
				1	2	3		4	5	6		7	8		
ON ↑ 	ON	ON	ON	2Lux	ON	ON	ON	5S	ON	ON		100%			
	-	ON	ON	10Lux	ON	ON	-	30S	ON	-		75%			
	-	ON	-	30Lux	ON	-	ON	90S	ON	-	-	50%			
	-	-	ON	50Lux	ON	-	-	5min	-	ON	ON	20min			
	-	-	-	Disable	-	ON	ON	20min	-	-	-	30min			
	-	-	-		-	-	-	30min	-	-	-				